

GEMTEX®
ABRASIVES

A Katy Company

OUR STORY

Gemtex® Abrasives was founded in 1975 by Phil Grimes and his son John Grimes. The family had been in the abrasives business for generations it was natural that they would create a company in the abrasive industry. Gemtex® Abrasives became a low cost Resin Fiber Disc producer by focusing on the environment. The process and the product were designed, around reducing, reusing and recycling. Thereby providing many cost advantages and being environmentally responsible long before it was popular.

In 1995, Gemtex® was acquired by Katy Industries. The Glit/Microtron division of Katy Industries is a world leader in the manufacture of non-woven abrasives. Since that time the joint venture has been very successful with many new products created for industrial applications.

Gemtex® produces and markets a full range of abrasives for grinding, sanding, surface conditioning, and finishing, as well as accessories. Gemtex® manufactures exclusively in The United States and Canada.

Gemtex® Brands

TRIM-KUT®



**Brite
prep™**

smd
SOFT METAL DISC

PMD

Glit®/Microtron®

OUR COMMITMENT

We are committed to deliver high quality North American products and prompt customer service. The Gemtex® competitive pricing program combined with customer training and sales support assures a supply of abrasives that generate high sales and profit for our customers.



MADE IN
 NORTH AMERICA

TABLE OF CONTENTS

RESIN FIBRE DISCS	4
FLAP DISCS	8
TRIM-KUT® DISCS	10
MINI GRINDING DISCS	12
BRITE PREP™ NON-WOVENS	14
 SURFACE CONDITIONING MATERIAL	14
 SURFACE CONDITIONING BELTS	16
 SCUFF BALL™	18
 HAND PADS, SCUFF ROLLS & DISCS	20
 STRIP AWAY®	22
SPECIALTY	24
 SANDPAPER	24
 SANDSCREEN	26
FLEXIBLE ABRASIVES	27
GLIT®/MICROTRON®	28



GEMTEX® RESIN FIBRE DISCS

Resin Fibre Discs are manufactured utilizing a multilayer, heavy duty vulcanized fibre as backing, which is then covered with a resin bond coat specially designed to resist loading, glazing and grain stripping. This bond coat is then covered with mineral abrasive grains formulated for toughness and sharpness. Choosing the right disc for the job assures improved productivity.

Resin Fibre Discs are available in a wide range of grit sizes, minerals, and sizes. Selection of the optimal disc depends on a variety of factors.

SIZE / GRIT	16	24	36	50	60	80	100	120	RPM
4" x 5/8"	•	•	•	•	•	•	•	•	15,000
4.5" x 7/8"	•	•	•	•	•	•	•	•	13,000
5" x 7/8"	•	•	•	•	•	•	•	•	12,000
7" x 7/8"	•	•	•	•	•	•	•	•	8,600
9" x 7/8"	•	•	•	•	•	•	•	•	6,500

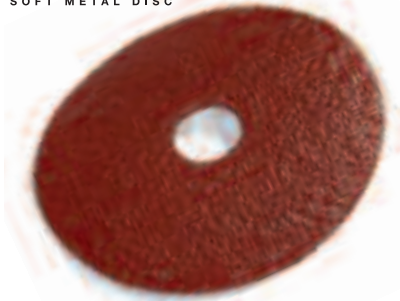
“C” TYPE



“C” Type Aluminum Oxide Resin Fibre discs provide overall economy with good performance in an all purpose resin fibre disc. Containing no halogen producing grinding additives. “C” Type has been designed to excel in a wide variety of applications providing both cost effective stock removal, and a safer working environment.

- Low cost general purpose industrial quality disc
- The “classic” RFD, clean bonding system promotes a safer, healthier working environment
- No harmful additives, user friendly





“SMD” Type are Soft Metal Discs designed for use on soft metals like bronze, brass and aluminum. These discs disperse their own lubrication as the disc grinds, delaying heat build up of the metal work piece. Lower work surface temperature means melting is delayed, allowing the disc to cut and last longer than regular discs. The protected disc acts as an open coat shedding any buildup of debris.

- Reduces disc waste, and costly changeover time
- Low pressure required for optimum performance
- Innovative NEW product

“A” TYPE



“A” Type represents superior grinding performance in a premium aluminum oxide resin fibre disc. A blend of advanced abrasive alloys and bonding agents delivers superior cutting rates and longer useful life. “A” Type provides optimal value when used in high stock removal applications and where a cool cutting action is required.

- Premium Aluminum Oxide grit delivers superior cutting rates
- Advanced bonding formulation provides cool grinding action extending disc life

“S” TYPE



“S” Type Silicon Carbide is designed for stone, terrazzo, ceramic and non-ferrous metal stock removal. The highest quality Silicon Carbide is selected for this resin fibre disc.

- Premium Silicon Carbide grit means fast cutting action on non-ferrous metal
- Clean bonding system promotes a safer, healthier working environment
- Definitive stone grinding

“ZEE” TYPE



“Zee” Type represents ultimate grinding performance in a premium Zirconium resin fibre disc. The extremely hard Zirconium abrasive alloy sharpens itself in use, delivering outstanding cutting rates and maximum useful life. The advanced bond extends disc life by minimizing grain shedding, while promoting a cool grinding action which reduces glazing and loading. “Zee” Type is most cost effective when used in high production applications where cutting rates are monitored.

- Premium Zirconium grit delivers ultimate grinding performance in resin fibre discs
- Advanced bonding formulation provides cool grinding action, extending disc life.
- Available up to 80 grit

“X” TYPE



“X” Type are coated with SG ceramic grain, a winner on applications where heat is a problem. The grains stay sharp as they fracture, because new cutting edges are continually exposed. A grinding product that continually exposes new cutting edges last longer. This self sharpening grain ensures consistent performance during the entire life of the disc.

- Maintain their sharpness longer in order to minimize metallurgical damage during metal removal.
- Cut heat sensitive metals fast with a noticeable reduction in discoloration of the work piece
- Outlasts other discs on carbon steel



“PMD” Type are Premium Metal discs developed especially for use on stainless steel and other alloys. Provides higher cut rates and cooler grinding temperatures. Heat treated blue fired ceramically coated aluminum oxide and ceramic grain. Custom blended grinding aid.

- Synthetic wax
- Anti glazing, anti loading, cool grinding product
- Works on hardest metals like stainless steel 300 series, carbon steel, exotic alloys and titanium
- Elite metal grinding

GEMTEX® RESIN FIBRE DISCS

Resin fiber Discs are available in many different styles. Variances include the diameter, the arbor hole size, the shape of the disc, the shape of the arbor hole, the thickness of the disc. Gemtex has the flexibility to create custom and special discs.

The chart below gives some indications of the possible configurations. As always please call for minimums and lead times as well as availability of anything not listed.

DIAMETER /SHAPE	1/4" CENTRE HOLE	1/4" CENTRE HOLE SLASH 1/2" LONG	5/16" CENTRE HOLE SLASH 1/2" LONG	3/8" CENTRE HOLE SLASH 1/2" CENTRE HOLE	1/2" CENTRE HOLE SLASH 1/2" CENTRE HOLE	5/8" CENTRE HOLE SLASH 1/2" CENTRE HOLE	7/8" CENTRE HOLE SLASH 1/2" CENTRE HOLE	LOCK 7/8" ARBOR 5/8" 11 THREAD
4" Round	•		•	•	•		•	•
4.5" Round						•	•	•
5" Round	•	•		•	•	•	•	•
6" Round						•	•	•
7" Round					•	•	•	•
7" Octagonal							•	•
7" Rosette							•	•
9" Round					•	•	•	•
9" Rosette							•	•

SLASHED



Slashed: 1/4" center hole with four 1/2" long cuts made from the center out.

SLOTTED



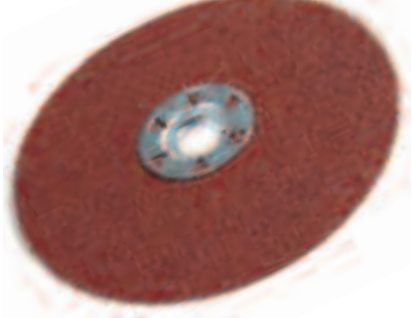
Slotted: The 1/2" cuts from the 5/8" or 7/8" arbor hole are cut outs, not just a slash.

ZONE COATED



Zone Coated: Grain is placed, leaving a clear Zone around the arbor. Easier to lock on a grinder and provides a tighter fit. Excellent on coarse grits, where grain can be a hindrance.

LOCK



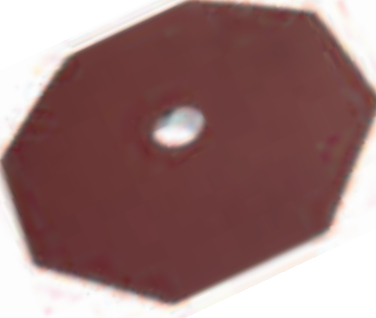
Lock: Can be applied to any disc with a 7/8" arbor. 5/8-11 threaded lock, allows the disc to spin on and off the spindle, without a locking nut or wrench.

ROSETTE



Rosette: An eight sided disc with rounded corners. Provides better access to corners, and allows a view of the work piece as you grind.

OCTAGONAL



Octagonal: An eight sided disc, provides a closer fit than a rosette.

BACKING PADS



Gemtex Air Cooled Backing Pads create a self contained cooling system when grinding. Made of high quality, tough and flexible polyimide. Backing Pads extend the life of Resin Fibre Discs and are essential to effective grinding.



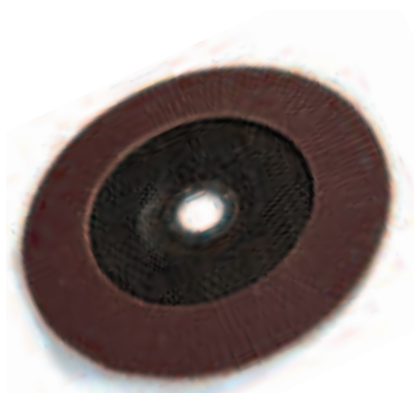
GEMTEX® FLAP DISCS

Our Flap Disc is a versatile grinding and finishing tool consisting of three main components; a fiberglass depressed center backing, adhesive, and rectangular pieces of abrasive cloth. The abrasive cloth is cut into rectangles, overlapped and glued to the fiberglass back, which provides longer life and a softer application.

Flap discs offer numerous advantages over depressed center wheels including; less noise, no loading, higher rate of material removal, no chattering or vibration and less operator fatigue. They are available in two styles; Type 27 which has a flat surface and Type 29 (conical) with the flaps placed at an angle.

Flap discs provide higher productivity and cost savings. Disc changes can be eliminated when you use one disc to go from grinding to blending and blending to finishing.

SIZE / GRIT	24	36	40	60	80	100	120	HUBBED	RPM
2" Type "R"	•	•	•	•	•		•		30,000
3" Type "R"	•	•	•	•	•		•		20,000
4" Type "27" / Type "29" Jumbo Style	•	•	•	•	•	•	•	•	15,000
4.5" Type "27" / Type "29" Jumbo Style	•	•	•	•	•	•	•	•	13,000
5" Type "27" / Type "29" Jumbo Style	•	•	•	•	•	•	•	•	12,000
7" Type "27" / Type "29" Jumbo Style	•	•	•	•	•	•	•	•	8,500

ALUMINUM OXIDE

General Purpose Aluminum Oxide material is available in all types and sizes in grits 40-120.

ZIRCONIA

Premium Zirconia cloth is also available in all types and sizes. Zirconia is considered your best value in a flap disc.

CERAMIC

New Ceramic cloth discs are available in all types in grits 40-120. Ceramic grain will give you the longest wear and most aggressive cut of all flap discs.

TYPE 27

Flat Style

**TYPE 29**

Conical Style



Type 27 the flaps are laid flat and the disc is used for flat grinding. A type 29 has a built in angle on the flap layers, making it easier for the operator to grind.

HUBBED

Hubbed discs have a built in 5/8-11 thread. They are available in 4.5, 5" and 7" discs across all types. Allows for easy disc changes, spin on and off.

MINI

Mini Flap discs provide all the same benefits of regular flap, great for hard to reach spots, and easy to maneuver. They come in 2" & 3" in both Type R and Type N quick lock designs. (See full quick lock system on page 13)

TIP: CHOOSE FLAP DISC ONE GRIT COARSER THAN THE RESIN FIBRE DISC YOU WOULD USE FOR THE SAME JOB.



GEMTEX® TRIM-KUT® DISCS

Trim-Kut® is a revolutionary abrasive disc designed to grind and finish a wide variety of materials faster and cooler than any other abrasive disc available today. The patented process of fusing premium abrasive grains to a durable polymer backing results in a highly versatile grinding tool that requires no backing pad. Trim-Kut® is readily trimmable to either renew the cutting surface or reduce the diameter.

Trim-Kut® discs are available in 3" and 5" for use on a drill or die grinder and 4.5" for use on an angle grinder.

These durable discs can be used for grinding or sanding. Their unique one-piece design eliminates the need for backing pads. Another major feature is that the discs can be trimmed. When the outside edge is loaded to the point where it is not grinding effectively, trim it off.

SIZE / GRIT	24	36	60	120	RPM
3" Aluminum Oxide	•	•	•	•	21,000
4.5" Aluminum Oxide	•	•	•	•	13,000
5" Aluminum Oxide	•	•	•	•	13,000
3" Soft Metal Disc	•	•	•	•	21,000
4.5" Soft Metal Disc	•	•	•	•	13,000
5" Soft Metal Disc	•	•	•	•	13,000
3" Silicon Carbide	•	•	•	•	21,000
4.5" Silicon Carbide	•	•	•	•	13,000
5" Silicon Carbide	•	•	•	•	13,000
3" Surface Prep - Medium Grit					21,000
4.5" Surface Prep - Medium Grit					13,000
5" Surface Prep - Medium Grit					13,000

*Other grades may be available upon request.

ALUMINUM OXIDE



Standard Trim Kut®. Renown throughout the industry, this easy to use all in one disc lives up to its reputation.

"S" TYPE BLACK



Same great Trim Kut® with Silicon Carbide mineral, great for use on stone and non ferrous metals.



Same great Trim Kut® now available in SMD formulation, specially lubricated to prevent soft metal loading.

DEPRESSED CENTER



Specially designed for use on 4.5" and 5" grinders, no special adapters required.



Trim Kut® easy to mount one piece design comes with a medium surface conditioning pad already mounted. Ready to use for finishing and preparation of surfaces. Other surface conditioning material grades are also available.



SURFACE PREP DEPRESSED CENTER



ALL 'N 1 MANDRELS

Variety of mandrels and adapters are available to use Trim Kut with almost any tool.

ADAPTERS



For us with 3" & 5" style Trim-Kut.

TRIM-KUT®

GEMTEX® MINI GRINDING DISCS

Mini Grinding Discs are manufactured with the same high quality as our Resin Fibre Disc utilizing a multilayer, heavy duty vulcanized fibre backing. They are covered with a formulated bond coat to resist loading, glazing and grain stripping. The bond coat is then covered by an electronic process with specially processed mineral abrasive grit engineered for toughness, sharpness, and bond.

The rapid change system is used with our Mini Grinding Discs. They are powerful, versatile, flexible, safe and economical. They will out-perform and out-last conventional 2-ply and 3-ply cloth backed discs. They are manufactured with aluminum oxide, zirconia, SMD, PMD and X type ceramic abrasive grain. Discs are available with either the Type "R" screw on or Type "N" twist on fastening systems.

SIZE / GRIT	24	36	50	60	80	100	120	HOLDERS	RPM
1.5"	•	•	•	•	•	•	•	•	30,000
2"	•	•	•	•	•	•	•	•	30,000
3"	•	•	•	•	•	•	•	•	20,000
4"	•	•	•	•	•	•	•	•	10,000
2" Mini Flap "R"								•	30,000
3" Mini Flap "R"								•	20,000

ALUMINUM OXIDE



Best for weld removal, blending and removal of imperfections.

PREMIUM ZIRCONIA



Best for quick stock removal on tough applications of most metals.



For use on soft metals.
Lubricated disc prevents loading.



TYPE "N"

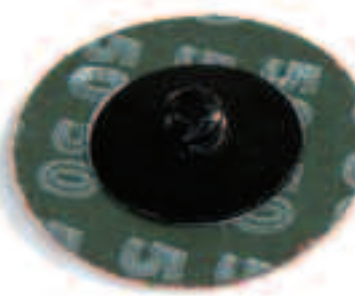


Premium Metal Disc is ideal for stainless steel and other hard metals.

TYPE "R"



Features the popular all-metal female attachment to ensure a safe and secure fit.



Features the common nylon threaded male button that mounts securely with a half turn.

QUICK LOCKING HOLDERS



Available in Type "R" and Type "N" styles in assorted sizes.

MINI FLAP DISCS

See page 8 for details.




GEMTEX® BRITE PREP™ NON-WOVENS

SURFACE CONDITIONING MATERIAL

Surface Conditioning, our high performance products are manufactured from a tight non-woven fiber web with a woven backing and impregnated with a specially processed mineral grain. They are tough, flexible and long lasting. They are ideal for deburring, blending coarse abrasive scratches and removing rust, corrosion, oxides, paint, adhesives and gaskets

Our Surface Conditioning products provide a fast initial cut and high rate of productivity. They are tough and long lasting. These discs feature our Rapid Change System with Type “R” screw on, Type “N” twist on and Hook & Loop fastening systems.

COLOUR coded by grit for easy identification:	 GOLD	 BROWN	 MAROON	 BLUE	 GREY
Abrasitivity:	Extra Coarse	Coarse	Medium	Fine	Very Fine
Application:	Heavy Rust Removal and Aggressive Deburring	Cleaning, Deburring and Aggressive Deburring	Blending, Cleaning and Finishing	Blending, Cleaning and Fine Finishing	Blending, Light Cleaning and Finest Finishing
TYPE/GRIT	EXTRA COARSE	COARSE	MEDIUM	FINE	VERY FINE
Type “R” 1 1/2”, 2”, 3”, 4”	•	•	•	•	•
Type “N” 1 1/2”, 2”, 3”, 4”	•	•	•	•	•
Hook & Loop 1 1/2”, 2”, 3”, 4”, 4.5”, 5”, 7”, 9”	•	•	•	•	•
Jumbo Rolls 48” x 25 yards	•	•	•	•	•

HOOK & LOOP



Loop sided discs for use on Velcro hook style backing pads.

TYPE "R"

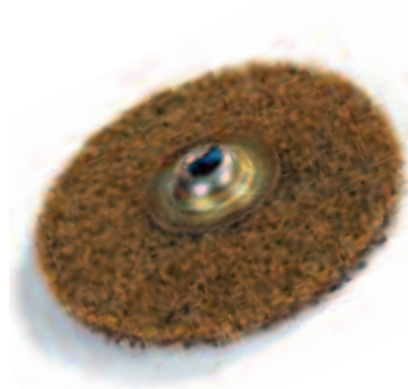
Roll On Style



Type "R" plastic male threaded, roll on quick locking style discs.

TYPE "N"

Screw On Style



Type "N" metal female sided quick locking style discs.

QUICK LOCK



New 5/8-11 threaded quick lock now available for use on 4.5, 5" and 7" discs.

TRIM-KUT®



All surface conditioning material is available premounted on 3', 4.5", and 5" Trim Kut® backings for ease of use.

QUICK LOCKING HOLDERS



Available in Type "R" and Type "N" styles in assorted sizes.

GEMTEX® BRITE PREP™ NON-WOVENS SURFACE CONDITIONING BELTS

Surface Conditioning Belts have an open web design which means a : *Long Life*, belts resist loading, open web allows ventilation when finishing. *Finish* can be repeated consistently. The wearing of the non woven scrim material ensures the continuous exposure of new grain, allowing the expected finish repeatedly. *No Heat*, the open web design keeps the work surface temperature from heating. Prevents discoloration, deformation and the need for subsequent operations.






Surface Conditioning Belts are ideal for deburring, blending tool marks, blending uneven edges, cleaning off coating, removing surface defects, parting lines, and flashing, as well as removing rust oxide, corrosion, paints and scale. They can be used for pipeline notching and beveling, and making decorative scratch patterns. They are available for all standard belt machines, and applications including: Portable file belts, Pump Sleeves, Bench top and Back Stand Belts

Gemtex® Surface Conditioning material is made of a 3 dimensional nylon filament web, coated with an industrial grain and phenolic resin to a reinforced synthetic mesh.

Surface Conditioning Belts are flexible and conformable they will easily fit to the work piece. The tough reinforced nylon web with abrasive grain resists loading, provides a consistent finish and eliminates edge fraying and grain shedding.

Surface Conditioning Belts are available in 5 grits.



COLOUR coded by grit for easy identification:	 GOLD	 BROWN	 MAROON	 BLUE	 GREY
Abrasitivity:	Extra Coarse	Coarse	Medium	Fine	Very Fine
Application:	Heavy Rust Removal and Aggressive Deburring	Cleaning, Deburring and Aggressive Deburring	Blending, Cleaning and Finishing	Blending, Cleaning and Fine Finishing	Blending, Light Cleaning and Finest Finishing

SIZE/GRIT	EXTRA COARSE	COARSE	MEDIUM	FINE	VERY FINE
1/2" x 18"	•	•	•	•	•
1/2" x 24"	•	•	•	•	•
3/4" x 18"	•	•	•	•	•
3/4" x 20 1/2"	•	•	•	•	•
1" x 42"	•	•	•	•	•
1" x 72"	•	•	•	•	•
2" x 48"	•	•	•	•	•
2" x 60"	•	•	•	•	•
2" x 72"	•	•	•	•	•
2" x 132"	•	•	•	•	•
2 3/4" x 15 1/2"	•	•	•	•	•
3" x 10 11/16"	•	•	•	•	•
3" x 24"	•	•	•	•	•
3" x 132"	•	•	•	•	•
3.5" x 15.5"	•	•	•	•	•
4" x 24"	•	•	•	•	•
4" x 36"	•	•	•	•	•
4" x 54"	•	•	•	•	•
4" x 132"	•	•	•	•	•
5 3/8" x 11 5/8"	•	•	•	•	•
6" x 48"	•	•	•	•	•
6" x 60"	•	•	•	•	•

Custom sizes available, call for information.

GEMTEX® BRITE PREP™ NON-WOVENS

SCUFF BALL™

The Scuff Ball™ is made up of individual layers of BritePrep™ non-woven material, with strategically placed radial cuts. The layers are assembled and compressed into a ball, which is then mounted on drive shaft for use on power tools. There are a series of fingers that can reach in to tight spaces, with an overall ball shape that conforms to the work piece, with versatility and flexibility. The Scuff Ball™ is made of BritePrep™ non woven materials. Non woven abrasives utilize abrasive grain impregnated throughout a 3 dimensional nylon filament web, which is then bonded with resin.



SIZE / GRIT	TAN	GREEN	MAROON	GREY	WHITE
2.5"	•	•	•	•	•
4"	•	•	•	•	•
10" Extension Bar	<i>Fits all sizes and grits.</i>				

SCUFF BALL™ FEATURES

- Flexibility, the non woven abrasive is soft and adaptable to unusual shapes.
- Consistent finishing quality, the continuous exposure of new grit means the consistency of the Scuff Ball™ does not change throughout its' entire life.
- Resists clogging, open web design, and 3 dimensional texture, loses the abraded material.
- Won't overheat open web design allows for a highly efficient air flow.
- Easy to clean, using water, or compressed air, removes excess abraded material for a fresh start.

SCUFF BALL™ BENEFITS

- Power Scuffing, replaces labor intensive hand scuffing.
- Improved Performance, the ball shape provides superior performance over hand scuffing, and reduces the job time.
- Versatile 5 different materials for different applications.
- Durable superior ball construction lasts longer due to self renewing scuffing surface.
- Convenient Scuff Ball™ works with most drills and electric or pneumatic grinders.

SCUFF BALL™ LINEUP

Tan - heavy duty, extremely aggressive, can be used for paint removal and stripping.

Green - coarse compares to a #2 steel wool, often used on food processing equipment and stainless steel.

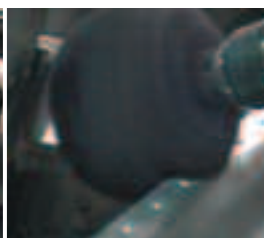
Maroon - General purpose or medium compares to a #00 steel wool. Aluminum oxide grain.

Grey - ultra fine compares to a #000 steel wool. The only product with Silicon Carbide grain. This is a particularly sharp grain that is very fine, it will produce a bright shiny surface.

White - Least abrasive, used for cleaning and polishing type applications.



Ideal for doors & door jambs



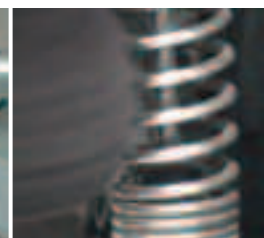
Scuffs over rivets and screw heads, no snagging or tearing, covers high and low areas.



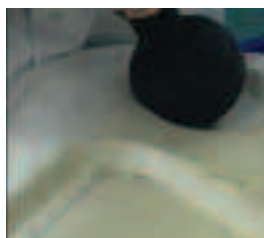
Safely removes scale and oxidization



Ideal for polishing soft metals



Ideal for hard to reach areas - Individual layers, and fingers reach in.



Easily adapts to different angles and contours



Scuff ball molds itself to contour shapes perfectly



Scuff with no flat spots



Fits around bar, and inside the tight area



Do not exceed the following maximum operating speeds.	
2.5" MAXIMUM RPM 10,000	4" MAXIMUM RPM 5,000

**Brite
prep™**

scuffBALL™

GEMTEX® BRITE PREP™ NON-WOVENS

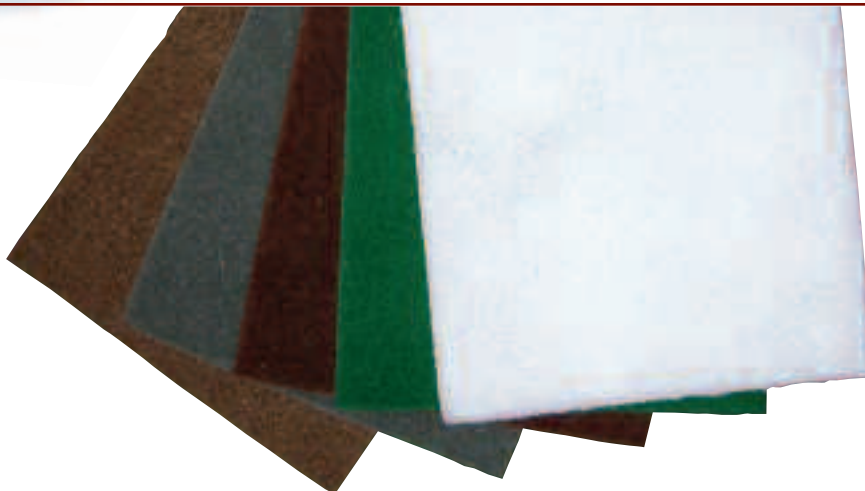
HAND PADS, SCUFF ROLLS & DISCS







Gemtex® BritePrep™ Non-Woven Abrasive products are manufactured from synthetic fibers, bonded together with specially formulated resins and impregnated throughout the web with mineral grain creating an open, three dimensional structure. These products are designed for a broad range of jobs including light duty cleaning, polishing, scuffing, finishing and for heavy duty jobs including paint, rust and corrosion removal.

Gemtex® BritePrep™ Non-Woven Products are manufactured from tough synthetic fibers that will not rust, they can be used for dry scuffing and finishing or may be used with water or chemical solvents. They are flexible enough to be used in hard to reach spots, yet strong enough for continuous use. They are produced in a variety of grades ranging from hand cleaning to high-speed machine use.

HAND PADS

for hand scuffing.



COLOUR coded by grit for easy identification:	 TAN	 GREEN	 MAROON	 MAROON	 GREY	 WHITE
	Heavy Duty	Industrial	General Purpose	Premium	Ultra Fine	Non-Abrasive
Light Duty Clean						•
Primer Rub Down			•	•	•	
Over Spray Removal			•	•	•	
Scuff			•	•	•	
Final Prep			•	•	•	
Blend			•	•	•	
Heavy Duty Clean		•		•		
Fine Finish					•	
Coarse Finish	•					
Remove Rust & Paint	•	•				

PRODUCT	SIZE	HEAVY DUTY	INDUSTRIAL	GENERAL	PREMIUM	ULTRA FINE	NON-ABRASIVE
Jumbo Rolls	48" x 30 yds	•					
Jumbo Rolls	80" x 50 yds		•		•	•	
Jumbo Rolls	57" x 50 yds						•
Jumbo Rolls	40" x 50 yds		•	•	•	•	
Hand Pads	4" X 6"	•	•	•	•	•	•
Hand Pads	6" X 9"	•	•	•	•	•	•
Scuff Rolls	4" x 30"	•	•		•	•	
Scuff Rolls	6" x 30"	•	•		•	•	
Scuff Discs	5", 6", 8"		•		•	•	

SCUFF ROLLS

Convenient 30 yard rolls in 4" or 6" widths. Cut off exactly how much you need.



SCUFF DISCS

for use on sanders in 5", 6" & 8".



Brite
prep™

GEMTEX® BRITE PREP™ NON-WOVENS

STRIP AWAY®

Strip Away® discs are made from a tough, synthetic fiber impregnated with abrasive grit. They are a safer alternative to wire bristle tools. These unique discs provide fast cutting action with virtually no heat build-up. The open coat design quickly cleans surfaces without damage.

Also available in Blue Ultra Strip Away® material. For Ultra fast cutting, where a more aggressive product is needed.

SIZE/TYPE	ARBOR 1/4"	ARBOR 1/2"	ARBOR 5/8"	ARBOR 7/8"	TYPE "R"	HOOK & LOOP	DEPRESSED CENTRE	SINGLE DISC 1/4" SPINDLE	DOUBLE DISC 1/4" SPINDLE	TYPE "R" HOLDER	HOOK & LOOP HOLDER
2"	•	•			•					•	•
2.5"	•	•	•		•			•	•		
3"	•	•	•		•			•	•	•	•
3.5"		•	•				•				
4"	•	•	•		•	•	•	•	•	•	•
4.5"	•	•	•	•		•	•				•
5"	•	•	•	•		•	•	•	•		•
6"		•	•	•		•	•				•
7"		•	•	•		•	•				•
8"		•	•	•							•

ARBOR HOLE



Various diameters in both 1/4" and 1/2" arbor holes.

MANDREL



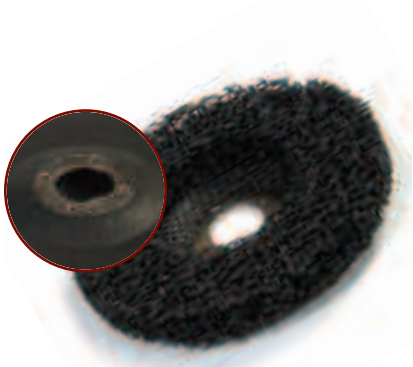
Reusable mandrel, will fit 1/2" arbors.

TYPE "R" ROLL ON



Quick locking system Type R" roll on plastic male thread.

DEPRESSED CENTRE



Depressed center style for 4.5" & 5" grinders.

HOOK & LOOP



Loop sided backing for use with Velcro hook style backing pads/holders.

SHEETS



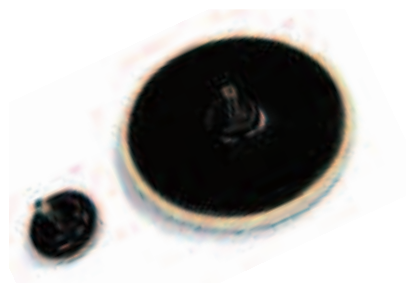
31" x 12" sheets for converting.
Available in blue and black material.

RAPID CHANGE HOLDER



Available in Type "R" and Type "N" styles in assorted sizes.

VELCRO HOLDER



Male hook sided holders.

**Brite
prep™**

STRIPAWAY®

GEMTEX® SPECIALTY SANDPAPER

Our Abrasive Sandpaper Products are available in a broad range of sheets, discs and rolls. These products are manufactured under a strict quality control utilizing the finest backing, specially formulated bond coat and mineral grain. Our high quality Sandpaper meets the requirements of Industrial and Automotive Refinishing applications.



A letter is used to indicate what product is available in the different diameters, styles, grits and sizes.
 The letter used indicates the paper's weight.

SIZE/GRIT	36	40	50	60	80	100	120	150	180	220	240	280	320	400	600	800	1000	1500
9" x 11" Sheets Waterproof S/C					C	C			C	B				B		B		A
5.5" x 9" Sheets Waterproof S/C																	A	A
9" x 11" Sheets Al/Ox	E	E																
9" x 11" Sheets Stearate Sheet A/O					A	A	A	A	A	A	A	B	A	A	B			
6" No-Hole PSA Gold A/O	E	E																
8" No-Hole PSA Gold A/O	E	E			C													
6" 6-Hole PSA Roll Gold A/O						C		C		C			C	C				
6" No-Hole PSA Roll Gold A/O					C	C	C	C	C	C	C	C	C	C				
5" No-Hole PSA Roll Gold A/O					C	C	C	C	C	C	C	C	C	C				
5" No-Hole Grip Gold A/O		E			C	C	C	C	C	C	C		C	C				
5" 5-Hole Grip Gold Al/Ox				C	C	C	C	C	C		C		C					
5" 8-Hole Grip Gold A/O					C	C	C	C	C		C							
6" No-Hole Grip Gold A/O	E	E		C	C	C	C	C	C	C	C	C	C	C				
6" 6-Hole Grip Gold Al/Ox			C										C					
8" No-Hole Grip Gold A/O		E			C													
File Boards PSA Roll Gold A/O					C	C	C		C	C	C		C	C				
File Sheets Clip On Gold A/O	E	E			E	C	C	C	C	C								
File Sheets PSA 2-3/4" x 16-1/2" Gold A/O		E			E		C											
File Sheets Hook & Loop 2-3/4" x 16-1/2" Gold A/O		E			E													
Resin Bond Abrasive Cloth Rolls Al/Ox 1" x 50 YDS	J	J	J	J	J	J	J	J		J		J						
Resin Bond Abrasive Cloth Rolls Al/Ox 1.5" x 50 YDS	J	J	J	J	J	J	J	J	J			J						
9" x 11" Cloth Sheets A/O				X	J	J	J	J	J		J		J					

GEMTEX® SPECIALTY SANDSCREEN

Gemtex® Sandscreen is manufactured with an open weave design that resists loading. It is coated on both sides with Silicon carbide grain. Gemtex Sandscreen is long lasting in wet or dry use. The perfect choice for wood floor refinishing, and sanding dry wall or plaster. Our Sandscreen is available in a broad range of sizes and grits. There are two different sizes of weave. An S16 is a larger more open weave than an S20. These products are available in Jumbo rolls as well as discs and sheets.

SANDSCREEN SHEET



SANDSCREEN DISC



DRYWALL SANDSCREEN



PLUMBERS ROLLS

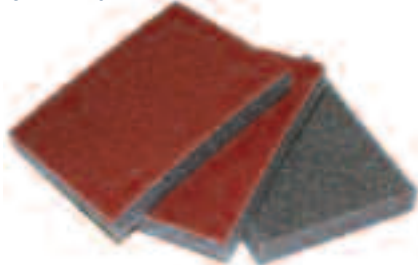


TYPE/GRIT	60	80	100	120	150	180	220	240	280	320
Jumbo 44" x 50, 100 yds - S16	•	•	•	•	•	•	•	•	•	•
Jumbo 44" x 50, 100 yds - S20	•	•	•	•	•	•	•	•	•	•
Sheets 9" x 11" - S16	•	•	•							
Sheets 9" x 11" - S20				•	•	•	•	•	•	•
Floor Discs 15", 16", 17", 18", 19", 20"	•	•	•	•	•	•	•			
Sheets 4-3/8" x 11", 3-5/16" x 11"	•	•	•	•	•	•				

* 400 & 600 grits available upon request

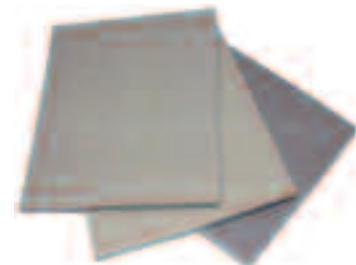
GEMTEX® FLEXIBLE ABRASIVES

SANDING PAD



Extremely Flexible for hard to reach and contour surfaces.

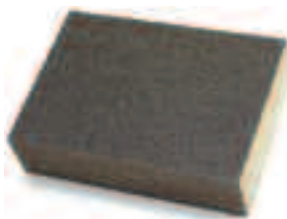
SANDING SPONGE



Ideal for paint, drywall, metal, ceramics, wood and marine applications. Rinse and reuse.

FOR USE
WET OR DRY!

SANDING BLOCK



Ideal for flat or rounded surfaces.

DUAL ANGLE SANDING BLOCK



For those hard to reach surfaces, angled sides allow you to reach in corners and crevices.

JUMBO SANDING BLOCK



Ideal for professional paint and Drywall Surface preparation. Larger size, lasts longer, provides more surface coverage and is easier for the hand to hold.

	COARSE 60g	MEDIUM 80g	FINE 100g	EXTRA FINE 150g	SUPER FINE 220g	ASSORTED C/M/F
Sanding Pad 3" x 4" Single Sided, 1/2" Thick	•	•	•	•	•	•
	COARSE 60g	MEDIUM 120g	FINE 240g	ASSORTED C/M/F		
Sanding Sponge 4.5" x 5.5" Single Sided, 1/4" Thick	•	•	•	•		
	COARSE /MEDIUM	MEDIUM	MEDIUM /FINE	FINE		
Sanding Block 2-3/4" x 4", Four Sided	•	•	•	•		
Dual Angle Sanding Block 4-7/8" x 2-7/8", Four Sided	•		•			
Jumbo Sanding Block 3-5/16" x 9", Four Sided			•			

A PAD FOR EVERY USE:

All floor maintenance pads are designed and produced for superior performance on specific floor surfaces. They can be used wet or dry with conventional or high speed machines in institutional, commercial or industrial applications.

CONVENTIONAL FLOOR PADS	11"	12"	13"	14"	15"	16"	17"	18"	19"	20"	21"	22"	23"	24"
Black - Stripping	•	•	•	•	•	•	•	•	•	•	•	•	•	•
Brown - Dry Strip		•	•	•	•	•	•	•	•	•	•	•	•	•
Green - Scrubbing		•	•	•	•	•	•	•	•	•	•	•	•	•
Blue - Cleaner		•	•	•	•	•	•	•	•	•	•	•	•	•
Red - Buffing	•	•	•	•	•	•	•	•	•	•	•	•	•	•
Tan - Polishing		•	•	•	•	•	•	•	•	•	•	•	•	•
White - Super Polish	•	•	•	•	•	•	•	•	•	•	•	•	•	•
Red 40-D Polish	•	•	•	•	•	•	•	•	•	•	•	•	•	•

ULTRA HIGH SPEED FLOOR PADS	BLUE ICE™	JOEY™	UHS AQUA	BEIGE	BEIGE POLY THERMAL	COCO PAD™	JACKEROO LITE™
PROPANE 2000-3000 RPM							
SOFT Buffable Finish	•		•	•	•	•	•
MEDIUM Durable Finish					•		•
HARD Highly Durable Finish							
PROPANE 1500-2000 RPM							
SOFT Buffable Finish	•		•	•	•	•	•
MEDIUM Durable Finish					•		•
HARD Highly Durable Finish							
ELECTRIC 1500 + RPM							
SOFT Buffable Finish	•	•	•	•	•	•	•
MEDIUM Durable Finish					•	•	•
HARD Highly Durable Finish							
ELECTRIC 1000 RPM							
SOFT Buffable Finish	•	•	•	•			
MEDIUM Durable Finish							•
HARD Highly Durable Finish							•

ULTRA HIGH SPEED FLOOR PADS	CHAMPAGNE	UHS TAN	JACKEROO™	PEACH	100-D NATURAL POLY THERMAL	BUCKAROO™
PROPANE 2000-3000 RPM						
SOFT Buffable Finish						
MEDIUM Durable Finish	•	•	•		•	•
HARD Highly Durable Finish	•	•	•		•	•
PROPANE 1500-2000 RPM						
SOFT Buffable Finish						
MEDIUM Durable Finish	•	•	•		•	•
HARD Highly Durable Finish	•	•	•		•	•
ELECTRIC 1500 + RPM						
SOFT Buffable Finish				•		
MEDIUM Durable Finish	•	•	•	•	•	•
HARD Highly Durable Finish	•	•	•		•	•
ELECTRIC 1000 RPM						
SOFT Buffable Finish				•		
MEDIUM Durable Finish	•	•	•	•	•	•
HARD Highly Durable Finish	•	•	•		•	•



**“The Brands You Know, The Products You Trust,
The Solutions You Deserve”**



GEMTEX® ABRASIVES & ACCESSORIES RETAIL PRODUCTS



Gemtex® Abrasives was a pioneer at introducing industrial grade products to consumers. Our very attractive packaging is designed for the impulse sale in show rooms or retail stores. There are a very broad range of products available from resin fibre discs to flap discs and even unique product offerings that are not available from anyone else. This packaging shows off the product beautifully which will enhance the appearance of any showroom and increase sales.



60 Belfield Road, Toronto, Ontario, Canada, M9W 1G1
Tel: (800) 387-5100 (416) 245-5605
Fax: (866) 263-7936 (416) 245-3723

www.gemtexabrasives.com